

H.T.No.

--	--	--	--	--	--	--	--	--	--

Code No: CE1507

GEC-R14

II B. Tech I Semester Supplementary Examinations, January 2017

BUILDING PLANNING AND DRAWING

(Civil Engineering)

Time: 3 Hours

Max. Marks: 60

Note: Answer any **THREE** Questions from PART-A.

Answer **ONE** Question from PART-B.

PART-A

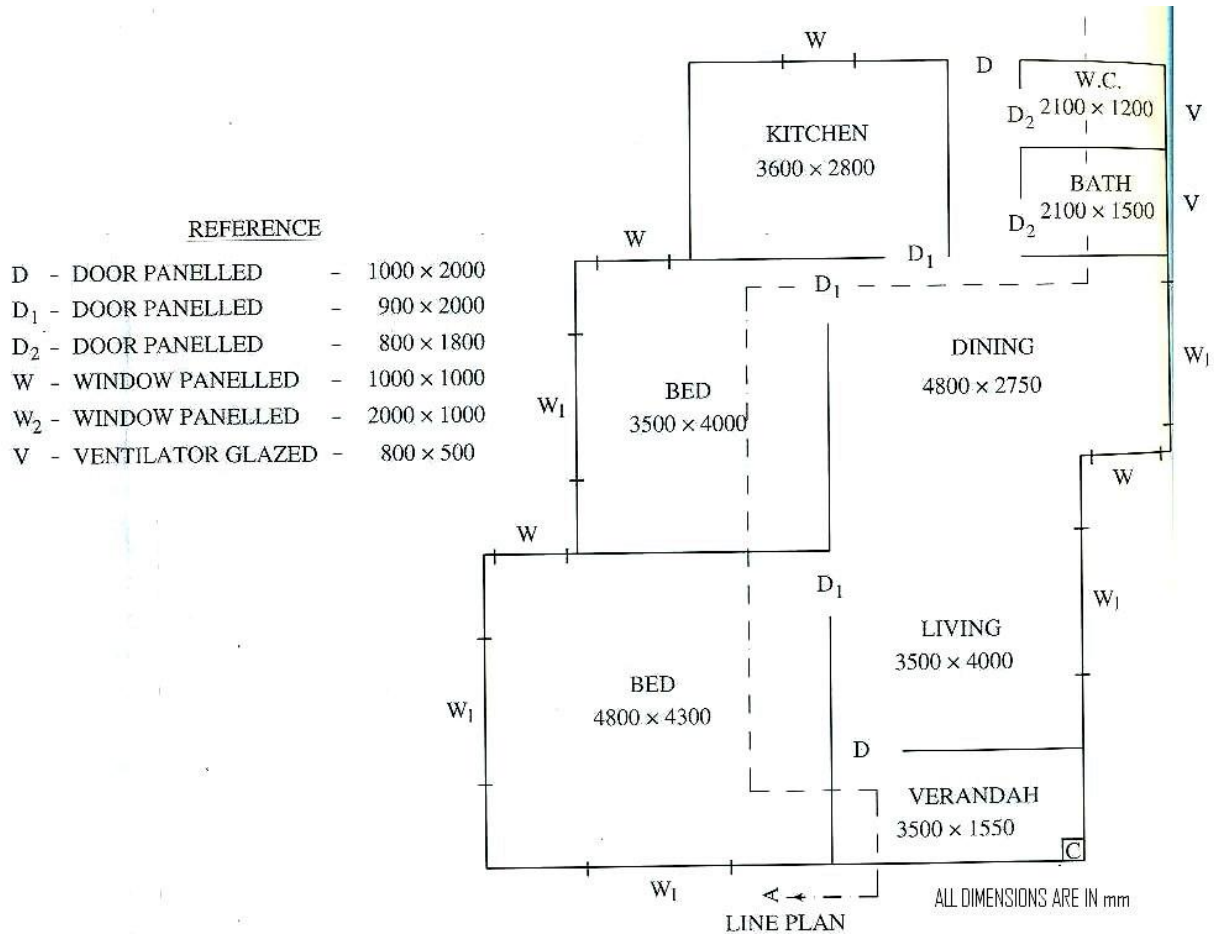
3 × 12 = 36M

1. a) How the climatic zones are classified? (3M)
b) Differentiate between F.A.R and F.S.I (3M)
c) What is meant by orientation of building? Mention some suggestions for good orientation of the building in a tropical climate. (6M)
2. a) Write short notes on: (6M)
i) Buildings bye-laws for size of rooms
ii) Buildings bye-laws for off-sets
b) Discuss the requirements of a residential buildings to accommodate a family of 6 members. (6M)
3. A commercial bank proposes to build its branch office in a village. The branch is to have the following Accommodation. (12M)
i) Agent's room 15 sq.m. ii) Strong room 10 sq.m.
iii) Store and record 20 sq.m. iv) Hall with counter 40 sq.m.
v) Safe deposit vault 20 sq.m.
Draw the ground floor plan to a scale of 1:50
4. a) What are the basic differences between English bond and Flemish bond? Explain with neat sketches. (6M)
b) Draw neat sketch to illustrate the layout of bricks in two adjacent courses of the right angled corner of one and half thick wall in Flemish bond. (6M)
5. Give a neat dimensioned sketch of a king post Truss and give details at any joint. (12M)

PART-B

1 × 12 = 12M

1. Draw the plan, section and elevation of the given line diagram. Assume the necessary data suitably.



2. Draw the plan, section and elevation of given line daigram for a poposed primary health centre: assume the necessary data suitably.

